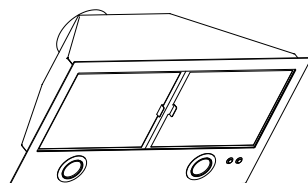
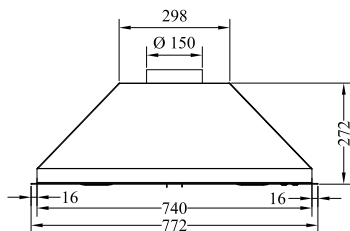
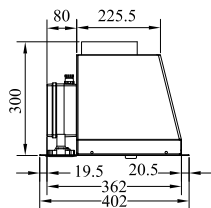


**KAI90-120-150****CAPPE di tipo "PROFESSIONALE"  
da INCASSO**

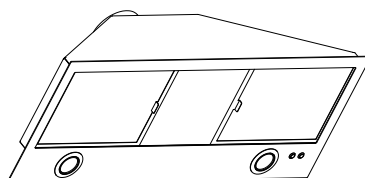
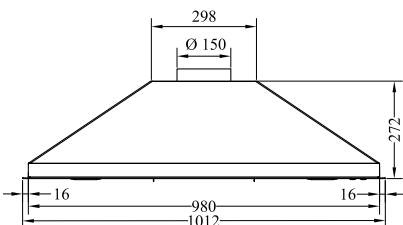
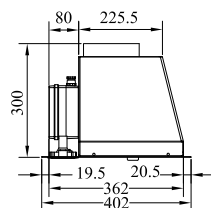
mm 900-1200-1500x400

per alte temperature, anche sopra le cucine a legna

**KAI90****Acciaio inox**

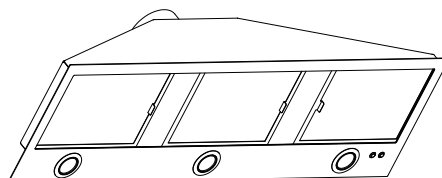
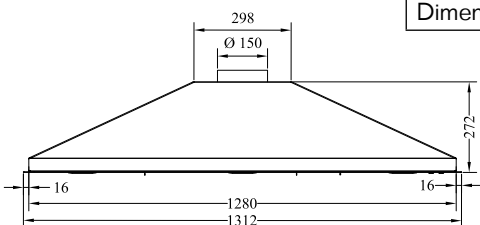
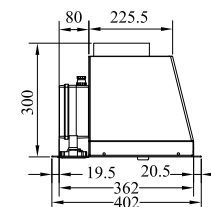
- portata max (aspirante) mc/ora 900
- motore da 355 W a 4 velocità
- illuminazione 2 faretto led
- scarico  $\varnothing$  150 mm
- filtri antigrasso inox n°2

Dimensione foro incasso mm 745x375

**KAI120****Acciaio inox**

- portata max (aspirante) mc/ora 900
- motore da 355 W a 4 velocità
- illuminazione 2 faretto led
- scarico  $\varnothing$  150 mm
- filtri antigrasso inox n°2

Dimensione foro incasso mm 985x375

**KAI150****Acciaio inox**

- portata max (aspirante) mc/ora 900
- motore da 355 W a 4 velocità
- illuminazione 3 faretto led
- scarico  $\varnothing$  150 mm
- filtri antigrasso inox n°3

Dimensione foro incasso mm 1285x375